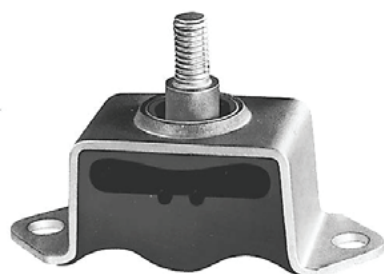


## Rubber-metal element Type GMD-1, GMD-2

Ceiling element with male or female thread



Type GMD-1

### Structure type GMD-1 / GMD-2

- Type GMD-1 with male threaded bolt vulcanized into the rubber
- Type GMD-2 with female threaded bolt vulcanized into the rubber

### Metal parts

- Material: 1.0038 (S235JR) / 8.8
- Corrosion protection: oiled or electrogalvanized

### Rubber element

- Very elastic rubber element with safety bar and stopper. Vulcanized U-metal profil.

Rubber grade	Rubber hardness	Possible uses
<b>NBR</b>	<b>hard – 70 Shore A</b> <b>medium – 60 Shore A</b> <b>soft – 45 Shore A</b>	<b>Water, gas, fuel oil, mineral oil</b>

### Dimensions/stress type GMD-1

A	B	H	I	G	d	Rubber hardness Shore A	Tensile/compressive stress Spring excursion max. mm	Tol. dynamic load N	Tol. static load N	Art. No.	Pck. qty.
72	32	38	15	M 8	8.5	70	9	1500	550	51893500-00	10
72	32	38	15	M 8	8.5	60	9	1000	350	51893600-00	10
72	32	38	15	M 8	8.5	45	9	600	200	51893700-00	10

### Dimensions/stress type GMD-2

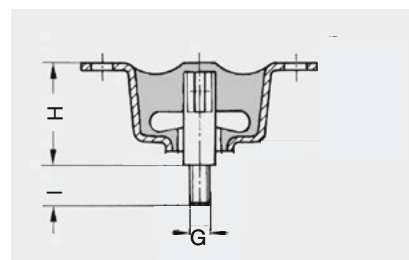
A	B	H	I	G	d	Rubber hardness Shore A	Tensile/compressive stress Spring excursion max. mm	Tol. dynamic load N	Tol. static load N	Art. No.	Pck. qty.
72	32	38	15	M 8	8.5	70	9	1500	550	51893800-00	10
72	32	38	15	M 8	8.5	60	9	1000	350	51893900-00	10
72	32	38	15	M 8	8.5	45	9	600	200	51894000-00	10

The stated tolerable loads are only approximate indications for the static load. Delivery only possible in the stated packaging quantities (far-right column).

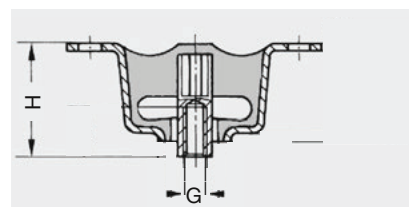
### Applications

- ideal for elastic suspension of appliances and pipes from ceilings and walls
- for damping sound and vibration
- for soft absorption of shock and acceleration force
- safe suspension of parts even under extreme impact stress
- for compressive stress
- for tensile stress

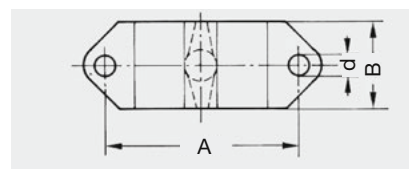
### Versions



Type GMD-1  
With male thread



Type GMD-2  
With female thread



Type GMD-1 and GMD-2  
Top view

### Note

Please comply with general technical instructions. Subject to technical alterations and deviations resulting from the manufacturing process.